



the Rambler

ISSUE 6 • FALL 2024



Election Information

Ballots must be postmarked on or before October 1 and returned using the envelopes included in the election mailing (addressed to the American Dorper Sheep Breeders Society).

Director Elections*

*For districts with more than one seat up for election, the candidate receiving the most votes will fill the full term, the candidate with the second most votes will fill the partial term.

District 1 - 1 full term, 1 partial term

John Baglien, Oregon

Jack Blattner, Idaho

[click to view district 1 candidate bios](#)

District 2 - 1 full term

Jeff Baumann, Missouri

Dennis Sorensen, Illinois

[click to view district 2 candidate bios](#)

District 3 - 1 full term, 1 partial term

Michael Jensen, Iowa

Kathy Krafka Harkema, Iowa

[click to view district 3 candidate bios](#)

District 4 - 1 full term

Randy Hodges, Michigan

Isaac Swortzel, Virginia

[click to view district 4 candidate bios](#)

Proposed Bylaw Amendments

Two proposed bylaw amendments on the ballot the fall of 2024:


Article V. DIRECTORS Section 3. Term of Office. The twelve members of the Board of Directors shall be elected from two geographic districts. Six Directors shall be elected from each district. States located east of the Mississippi River will constitute the East District and states located west of the Mississippi River shall constitute the West District including the entire state of Minnesota. Members located outside the United States shall be included in West District.

The term of office of the Directors shall be three years and until their successors are elected and take office. Nothing contained herein shall preclude a member of the Board of Directors from succeeding himself or herself except that no person shall consecutively serve more than two three-year terms. After two consecutive terms as a Director, a member is once again eligible to run for the Board term that begins one year after the completion of their most recent term. No more than two Directors residing in any one state may serve on the Board at any one time and all Directors must reside in the district which they represent unless there has been a realignment of the district during the Director's term of office.

In the event of realignment, a Director, whose state is realigned into a different district, shall continue to serve the district from which he or she was originally elected until the expiration of that Director's term of office. Any resulting conflict with these bylaws caused by realignment, such as the number of Directors required per district, shall be waived and accepted until the entire realignment process is complete.

ARTICLE XI. RULES OF REGISTRY The Board of Directors shall establish and enforce Rules of Registry. The Rules of Registry shall enumerate the standards for eligibility for the registration of Suffolk sheep in the Association. The Rules of Registry shall be written, published and made available to the membership online at the Association's website and made available in printed form upon request of a member. The Rules of Registry may be amended at the discretion of the Board of Directors.

Please reach out to a USSA board member with any question you may have - more information, including complete current and proposed bylaw language can be found on the [USSA website](#).



Monday, November 25th
7pm central

Join Zoom Meeting (clickable link can also be found at www.suffolks.org)

[Click for Zoom Link](#)

Call-In Number: 1 312 626 6799
Meeting ID: 891 1339 4619
Passcode: 159062

A PUBLICATION OF THE UNITED SUFFOLK SHEEP ASSOCIATION

TABLE OF CONTENTS

- Ewe & Neonatal Mgmt • P. 2
- Barn Chat • P. 4
- Junior News • P. 5
- USSA Message Board • P. 10
- Spreading the Word • P. 11
- Digital by Design • P. 13
- Foundation News • P. 14

[f @unitedsuffolk](#)

A Collaborative Publication



UPCOMING DATES TO NOTE

- October 1 - Postmark deadline to return director election and bylaw amendment ballots.
- October 21 - USSA Online Bred Ewe & Ewe Lamb Sale - @integritylivestocksales.com
- November 15-21 - North American International Livestock Exposition - livestockexpo.org
- November 25 - USSA Annual Meeting, 7pm central (zoom)



Cover photo credit: Bunker Hill Farm, OH
Share your Suffolk photos! Send to info@suffolks.org

Ewe and Neonatal Management

Presented by Preston H. Morris, DVM and Victoria J. Morris, DVM at The Suffolk Event, June 2024

For many of us, the most exciting and dreadful time of year is shortly approaching. That's right lambing season will be here before we know it! So how can we best prepare to make sure that everything is in order before that first lamb hits the ground?

First, let's start with the ewes, the best cure is prevention. We all know the issues that come with a ewe carrying triplets, pregnancy toxemia, difficult lambing, and the lambs not wanting to get up and going. Some of these issues can be prevented by good management and keeping a close eye on the animals. We recommend that you work closely with your veterinarian and do either a transrectal ultrasound if it is early in the pregnancy (<75 days), or a transabdominal ultrasound if they are further along. Knowing how many lambs the ewe has will help you to prepare the best management and feeding strategy to prevent these animals from going into negative energy balance (also known as pregnancy toxemia). In short, the animal is not consuming enough energy through feed to keep up with the demands that she is requiring. When this occurs, the ewe starts utilizing her own fat stores for energy which results in ketone bodies being produced. These ketones will help provide energy, but they will ultimately cause negative effects on the animal. Ketones suppress appetite so the animal cannot get out of the negative energy balance cycle. Preventing pregnancy toxemia is difficult but by increasing the amount of quality feed (high energy) these animals are receiving can help. This may also require feeding in a separate pen where competition for feed may be lower. By knowing how many lambs these animals are carrying will help you know well in advance which animals you need to be paying special attention to. However, you will not be able to prevent this from happening in all animals. Treatment of these animals needs to happen as soon as any clinical signs are shown. These signs include reluctance to eat, depressed demeanor, or animals excessively lying. Propylene glycol is the treatment of choice which provides energy to the animal. An adult animal should be given 60 milliliters per day, for 3-5 days: work with your veterinarian to come up with a treatment plan for your operation.



Next, let's discuss the lambs. Proper colostrum management is vital for healthy lambs. Good colostrum helps provide them with increased nutrition and builds their immune system faster. The quantity of colostrum is important, but even more, is the quality. A lamb needs to consume 8oz. of colostrum in its first 2 hours of life, and a 10 lb. lamb needs 30oz over its first 24 hours. Some weak lambs may require oral tubing to achieve these numbers.



How do we define "quality" colostrum? The best way is by using a brix refractometer (fig. 1), which reads the sugar content of the colostrum which correlates to the IgG levels. I recommend using colostrum that reads >24% on the brix scale. This will ensure that the lamb is provided with enough immunoglobulins to start building its own immune system. In some cases, the ewe may not produce enough colostrum for her lambs and a backup plan is needed in these situations. The first option is saving colostrum from ewes that produce more than what is needed for their own lambs. This colostrum should be tested to make sure that it meets the above standards, and then if it does, you can freeze it for later use. Pay special attention when thawing the colostrum and only use a warm water bath to do so; never use a microwave as it will degrade the immunoglobulins! At the end of the lambing season, it's important to discard this colostrum as it cannot sustain long term storage.



Figure 1. Brix Refractometer

The second option is to use a powdered colostrum, however, know that even the sheep specific powdered colostrum is based on cattle serum not sheep. These products should only be used when frozen colostrum is not available. When choosing a powdered colostrum, you will notice that two different products are on the shelf.

Colostrum Supplement vs. Replacement



One being a colostrum supplement, which is meant to supplement the lamb with colostrum that it has received from its dam. The other product is a colostrum replacer, which has a higher concentration of IgG in it. That higher

concentration will provide complete “replacement” of the maternal antibodies as well as giving the lamb nutrients that are required.

These are just a few items to make sure that you have on hand prior to lambing season. Some of these may be difficult to obtain when you need them the most, so we suggest that you purchase these ahead of time to be best prepared. We know many have a hard time finding a veterinarian who understands sheep production, so we want to point you to the American Association of Small Ruminant Practitioners website (AASRP.org). There you can find a link that will help you find a veterinarian who routinely works with small ruminants. Good luck with lambing season this year!



Suffolk Event presentations posted @www.suffolks.org!

SUFFOLK PROMOTERS

Our members are the best people to partner with to help promote the great Suffolk breed! Contact the USSA to complete your Suffolk display! We'll ship promotional items and copies of the Suffolk Source to you!

Share your display with us! This display was at the recent Garden State Sheep Breeders Festival in New Jersey, by the Smith Family!



Entry Deadline is October 8th!

Junior Show Judge: Billy Wade **Open Show Judge:** Mark Chapman

Sheep Events: November 15 -21

Complete schedule, premium book and entry information can be found at www.livestockexpo.org.

New classes offered for 2024! The NAILE junior Suffolk show and open Suffolk show will now offer two classes for fall born ewe lambs and ram lambs – 9/1 to 11/15 and 11/16 to 12/31 in both fitted and slick shorn divisions.

New! NAILE show programs will be offered by the United Suffolk Sheep Foundation for the junior and open Suffolk shows. The programs can be picked up at the Suffolk booth - free will donation. Programs will include sheep entered. Class splits/updated entries will be posted by NAILE after check-in is complete.

Open Show Exhibitors: As listed in the NAILE premium book, there is a \$10 per head entry fee for open show entries, paid directly to the United Suffolk Sheep Association prior to the show. There is no additional entry fee for the junior show. After NAILE, unpaid open show entries are \$20 per head.

Suffolk Juniors: Let's go to the rodeo together on Friday, November 15th. Tickets are only \$5! Contact Jodie Hoover (jodielhoover@gmail.com) or the Suffolk Office (info@suffolks.org) by Oct. 1 to purchase tickets/make reservations!

"Suggesting that we install barn cameras in strategic locations to monitor lambing season from the house. It has paid for itself many times over in saved lambs and ewes allowing for earlier intervention with the occasional dystocia case."

Bill Zwyers, Indiana

"If you plan to be in the sheep business long term, you cannot put up with problem animals."

Marlin Subra, Wisconsin

"Always keep the good mothers, no matter how good they look, if they won't raise their lambs they aren't any good to the flock."

Bill Fulton, Illinois

"Have a rectal thermometer handy, especially during lambing season. You don't need a fancy one, just get one at Walgreens relatively inexpensively. If any animals don't look right, not thrifty for example, check their temperate. Have an idea how to treat if the temperature isn't right. And have antibiotics on hand."

John Scott, Minnesota

"Remember that your Suffolk ram is half the genetics of your new lamb crop."

Bill Royer, Illinois

"It is one person's opinion one time. Raise what you like because at the end of the day their opinion doesn't matter."

Claire Ford, Indiana (UJSSA)

Dr. Harold Henneman, Animal Husbandry professor at Michigan State University:

"If a stud ram has not produced a son good enough to replace himself, you need a new stud ram!"

"Don't let the price you paid for your stud ram influence you to continue using him after he has proven himself unworthy!"

Alan Culham, Michigan

"The best sheep advice I have received and would repeat to others is "focus on the profitable, efficient, commercial lamb sector if you want to pay for the ranch." It worked for us. We now sell a couple hundred rams each year to commercial operators and the advice has proven to be sound."

Mike Duff, Idaho

"Cheap and sheep doesn't mix well."

"No matter what they look like, keep the daughters out of the good ewes. There's a reason you believe them to be the good ones, and their daughters will seldom disappoint you."

Greg Ahart, California

"A cheap stud ram is often the most expensive sheep you own."

The genetic impact (positive or negative) is far greater than any ewe in your flock. His influence will be felt for several generations. This is not the time for bargain shopping. The first step is to critically evaluate your ewe flock to identify weaknesses that you want to try to improve. Then find a ram that can improve those traits without sacrificing the strong points of your flock. Along with that- when you set your budget, don't be afraid to keep bidding if you find the ram you want. You'd be surprised how often one or two extra bids will get you the ram you want so you don't have to settle for a lesser ram. One last piece of advice on this topic - the best time to buy a new stud is when you don't really need one. Two of the most impactful stud rams I ever owned, I found when I didn't need a ram. It's much easier to stick to your priorities when you don't really need a new ram. Plus, it never hurts to have an extra good ram around; we've all had rams come up lame, go sterile or even die before breeding season.

Jeremy Geske, Minnesota

Enroll in the National Sheep Improvement Program. This piece of advice has made the greatest impact by adding value to our flock. I would encourage people to explore what NSIP can do for your flock. Contact me with questions.

Brenda Reau, Michigan

#1 from my uncle Alden- "Just because you spend a lot of money on a ram. Doesn't mean you have to use him."

#2 from my dad Norman - "Sometimes the best deal is made when you come home with an empty trailer."

Joe Olsen, Utah

THE SUFFOLK SHEEP



Photo credit: Mike Olsen, UT

Suffolks are found in the western range, farm flocks, purebred operations, commercial operations, feedlots, a part of youth projects, and in the showing. Suffolks are the essential terminal sire and demanded in the US Sheep Industry. Nearly 60% of American lamb is genetically influenced by black faced rams; progress of the Suffolk breed is not only impactful in your flock but essential to the US Sheep Industry.

THE SUFFOLK RAM

BIG, GROWTHY, MUSCULAR, 3-DIMENSIONAL, POWERFUL TERMINAL SIRE

THE SUFFOLK EWES

ENCOMPASSES MATERNAL MOTHERING AND MILKING ABILITY TO GET GROWTHY SUFFOLK LAMBS OFF TO GREAT START



Greetings Suffolk Enthusiasts,

My name is Raesa Zelinsky and it is an honor to be serving the Suffolk breed as President of the junior board. We are a group of Junior Suffolk enthusiasts that span across the United States. As a team we will prioritize junior members and their input. We are thrilled to be able to serve at a time with so much excitement within our breed. This was exemplified among young and old breeders at The Suffolk EVENT and the National Junior Suffolk Show in East Lansing. Our team encourages each and every individual to seek out the programs and opportunities that our association and foundation provides. The United Suffolk Sheep Foundation provides \$43,000 dollars in scholarship money to Suffolk breeders that are wanting to continue their education. Additionally, we have a ewe lamb grant program that supports young individuals wanting to start their own flock. During the year we encourage our breeders to nominate their ewe lambs to be futurity eligible, so during the show season you can gain points based on your placing in your class. All of the members are broken into different districts, with the first place winner from each district receiving premium money. We are excited for the new mentorship that Isaac Lewis will be providing for our Junior board.

This year, our team will strive to provide educational events through webinars online, engagement on social media, and building friendships with Suffolk enthusiasts around the country. As a Junior board we value the voice of the Junior membership, please take the opportunity to reach out to any board members with ideas or improvements that you have. As a team we ask that all juniors across this association take the time to seek out our junior activities and opportunities that are provided. Just know, young or old there is no better time to be involved in the Suffolk breed; a breed that meets the needs of today's consumer and commercial producers. A breed with an abundance of opportunities, showing, leadership events, and scholarships for its junior members. We look forward to crossing paths!

President's Message



Raesa Zelinsky
Brookings, South Dakota

NATIONAL JUNIOR SUFFOLK SHOW RECAP



UJSSA Member Group Photo

Suffolk Stats

In conjunction with **148 sheep**
48 exhibitors
13 states

Full Results // <https://allamericanjuniorshow.com/results-full/> //

*Mark
YOUR
Calendar!*



Current & Past
Jeff Bollinger Memorial Award Winners
Creed Harker, MacKenzie Hornbostel, Autumn Long



UJSSA Board of Directors
(L to R) Emily Long, Claire Ford, Katie Ford, Allee Hoover, Lilly Roe, MacKenzie Hornbostel, Creed Harker, Grandin Lewis, AJ Harris, Isaac Lewis (coordinator), Missing Raesa Zelinsky & Kayleen Kulas

2025 All-American Junior Show
July 3-6 Springfield, Illinois

THE SUFFOLK EVENT

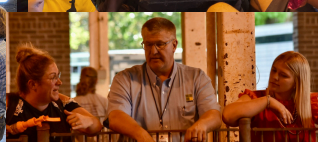
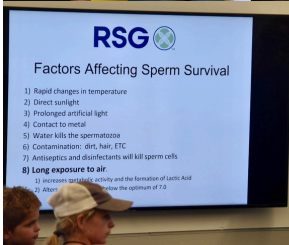
We had a great time in 2024!

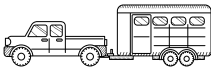
[View photos, sale results & educational programs at www.suffolks.org!](http://www.suffolks.org/)

225 attendees
20 states

Sale
39 head
Sale average \$1,160
Sold to 13 states

Junior Show
118 head
44 exhibitors
11 states





We hope you can join us in 2025 -details coming soon!



Thank You Suffolk Event Sponsors!



LLOYD & SHEILA McCABE
ILLINOIS SUFFOLK SHEEP ASSOCIATION
JMG SUFFOLKS
WILLIAM FULTON FAMILY*
PETH FAMILY FARM

SLACK SUFFOLKS & CLUB LAMBS
RUSSELL SHEEP COMPANY
HEUPEL FARMS*
PREMIER 1 SUPPLIES
HICKORY LANE SUFFOLKS

EMENHEISER SUFFOLKS
MICHAEL & DEBRA JENSEN, MOONSHADOW FARM*
DENNIS & MARY ANN SORENSEN*
CANNON RIVER SUFFOLKS. JOHN & CHRISTY SCOTT*

Sheep hEWEmers answers: 1) baaanana 2) It's pasture bedtime.

*Donor sponsorship received through the United Suffolk Sheep Foundation



RESOURCES WEBPAGE

<https://suffolks.org/resources>

The education committee has worked diligently to create numerous sheep resource documents in recent years - now these are available for anyone to easily access! Additionally, this page has association, Suffolk breed, research and other resources. Keep checking back to this page - there will be many more added in the new future!

SHEEP RESOURCES

- Body Condition Score
- Breeding Programs
- Carcass Evaluation
- Evaluating Teeth for Age
- Ewe Evaluation
- Genetic Conditions
- Glossary of Sheep Terms
- Head and Mouth Soundness
- Ram Evaluation
- Selection & Heritability
- Structural Correctness

SUFFOLK RESOURCES

- Suffolk History
- Suffolk Breed Standard
- Maternal Suffolks
- Association Resources
- Digital Suffolk
- Digital ToolBox
- Membership Benefits
- Registry Programs

SUFFOLK RESEARCH

NSIP National Sheep Improvement Program

OTHER RESOURCES

AMERICAN SHEEP INDUSTRY ASSOCIATION

AMERICAN LAMB BOARD



Lambtastic!

Chipotle Raspberry Spice Lamb Meatballs

By Nick Forrest, Ohio

Ingredients

- 1 lb ground lamb
- 1/3 cup of panko crumbs
- 1 tablespoon of Colonel De's Chipotle Raspberry Spice

Directions

Makes about 20 to 25 meatballs.
Sous vide style - 90 minutes @ 145 degrees
Fry pan - 2 tablespoons of olive oil Cooked until brown or internal temperature is 160 degrees F

Great dipping sauce to use Taco Bell Avocado Ranch (premade, found in the Mexican section of your grocery store)

Do you have a LAMBTASTIC recipe to share?
 Submit the recipe and photo to info@suffolks.org for a chance to be featured in the next issue!

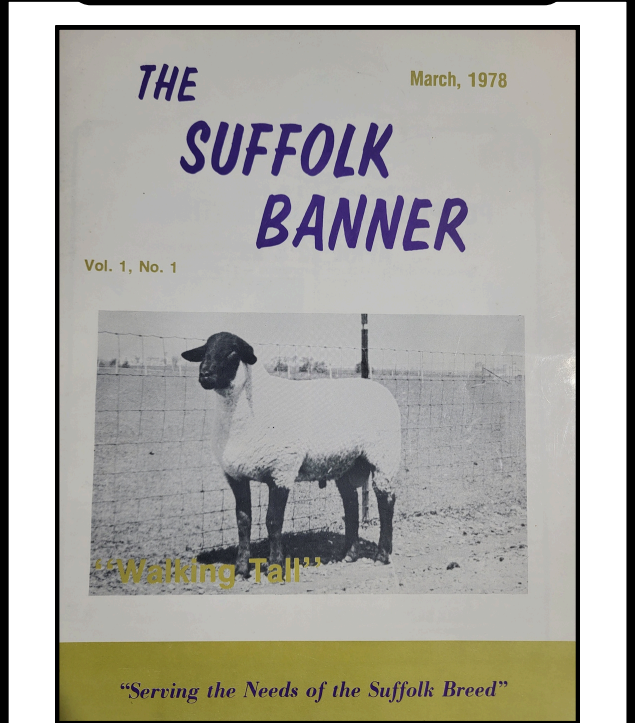


The Clever Cleaver

sous vide

A method of cooking food, especially meat or fish, by vacuum-sealing and immersing in warm water.

BLAST FROM THE PAST



First issue of The Suffolk Banner, published by Curt Overcash and Greg Deakin. The Suffolk Banner was published from March of 1978 to 1994 when the magazine was expanded to an all-breeds publication, The Banner Sheep Magazine.

USSA MESSAGE BOARD

2024 USSA ANNUAL MEETING NOTICE

We encourage all members to join us on Monday, November 25th at 7 pm central via Zoom. The meeting agenda and any other informational documents will be posted on the USSA website prior to the meeting. Please note you do not need a computer to join, you can call in!

Join by Computer: ([clickable link](#) found at www.suffolks.org)
 Call-In Number: 1 312 626 6799
 Meeting ID: 891 1339 4619
 Passcode: 159062

SUBMIT PHOTO /FREE REGISTRATION

Submit a favorite Suffolk photo you've taken for a chance to receive one of ten free registrations. This opportunity is open to USSA and UJSSA members. We're looking for photos of Suffolks from across the US to use in promotion of the Suffolk breed. The USSA has the right to use and reprint the photos that are submitted.

Submit photos to info@suffolks.org with the subject line "Favorite Suffolk Photo".

FEE CHANGE - LATE REGISTRATIONS

Effective January 1 2025, late registrations (sheep over one year of age) will change from \$15/head to \$20/head.

SUFFOLK HALL OF FAME NOMINATIONS

Is there a individual / flock / industry ambassador you feel should be considered for the Suffolk Hall of Fame? Members are encouraged to nominate individuals they feel are deserving for consideration into the Suffolk Hall of Fame.

The nomination submission deadline is December 31. Find nomination forms and more info about the Suffolk Hall of Fame, including past inductees at: <https://suffolks.org/hof.html>

FALL ONLINE SHEEP/EQUIPMENT SALE

An online fall bred ewe, ewe lamb and equipment consignment sale scheduled for October 21 via integritylivestocksales.com. The entry deadline is October 10.

Entry information: [//suffolks.org/wp/category/online-sales/](https://suffolks.org/wp/category/online-sales/)

REGISTRY PROGRAMS

The United Suffolk Sheep Association offers several registry programs in addition to its purebred registry. Some of these programs support or tie into the purebred registry through continual registry. For more details on any of these programs, please contact the USSA Office.



PUREBRED

BOTH PARENTS ARE 100% AND REGISTERED THROUGH THE ASSOCIATION, ALL OFFSPRING ARE PUREBRED

PERCENTAGE

BREED UP PROGRAM TO MAINTAIN RECORDS FOR SHEEP THAT HAVE NON-SUFFOLK DESCENDENTS. ONE PARENT MUST BE REGISTERED.

GAP

BREED UP PROGRAM DESIGNED TO RECONNECT SUFFOLK FLOCKS TO THE REGISTRY

Program application required.

AMNESTY

CATCH UP ON THE REGISTRATIONS OF YOUR REGISTERED SUFFOLK FLOCK AT REDUCED RATE

Program application required.

Learn More @ www.suffolks.org

Programs • Registry Programs

NEW
INTRODUCTORY MEMBERSHIP

CURRENT MEMBERS CAN NOW PURCHASE AN INTRODUCTORY MEMBERSHIP FOR THEIR CUSTOMERS FOR **\$20**

ELIGIBILITY
 MEMBER MUST TRANSFER AT LEAST ONE REGISTERED SHEEP TO NEW OWNER

Suffolk Connections

BENEFITS

COMING SOON

Work continues on outcomes of the USSA strategic planning. Specifically focusing on membership value and new member outreach, help us put the finishing touches on the Suffolk Connections. The vision is of this resource is to provide contact list of breeders who can be contacted on a variety of topics. This resource will be shared in new member packets and available to members in Digital Suffolk. Members can also request a copy from the USSA Office.

Now, we need your help! Did we hear a "sign me up"?!

We are looking to our member "experts" to help! Please email Amanda (info@suffolks.org) if you are willing to be listed in any of the categories below:

- Nutrition
- Health
- Lambing
- Parasite
- Exhibition
- Recordkeeping
- Digital Suffolk
- Direct Marketing
- Ram Development
- General
- Emergency (willing to take a call any time or day)
- Breeding & Genetics
- Commercial Production
- Marketing & Advertising
- National Sheep Improvement Program



SPREADING THE WORD



First Flock-Herd Grant Application Deadline Near

Interested youth now have until **October 1st** to submit grant applications for the First Flock-Herd program. The RSG Foundation is dedicated to providing grants for young individuals and their families to purchase breeding animals, services, equipment, animal health and nutritional products to help them establish their First Flock-Herd. The goal is to provide a sustainable program that leads to more youth getting involved in raising sheep or goats.

Youth Genetics Grant Application

Grants are provided to youth under the age of 21 for the acquisition of semen and/ or embryos from the RSG Foundation Gene Bank. The purpose of these grants is to provide genetics to help further advance a young person's sheep or goat breeding program. Grants are awarded quarterly to qualified grant applicants. To receive a grant please fill out the form below and click submit when finished. You will receive a confirmation email that your grant request has been received. Grant recipients will be notified via email with instructions on how to redeem your genetics. Grant recipients are required to have RSG or an RSG approved veterinarian perform LAI and embryo transfer work

[Learn More on the RSG Foundation website!](#)



Stop the Ban Supporters Rally in Denver

Denver voters will be asked in November to cast a vote on Initiative 309, which would ban slaughterhouses in the City and County of Denver. A diverse group of stakeholders – including the American Sheep Industry Association – convened on September 11th on the steps of Denver City and County Building to oppose the ban.

The question posed to voters: shall the voters of the City and County of Denver adopt an ordinance prohibiting slaughterhouses, and, in connection, beginning Jan. 1, 2026, prohibiting the construction, maintenance or use of slaughterhouses within the city; and requiring the city to prioritize residents whose employment is affected by the ordinance in workforce training or employment assistance programs?

While the question suggests multiple slaughterhouses, there is one operating in Denver – Superior Farms. The Halal-certified facility has been in the neighborhood for more than 70 years and is the only business targeted by the proposition.

[Read the full story at www.thefencepost.com.](http://www.thefencepost.com)

[Learn more at stopthebanprotectjobs.com.](http://stopthebanprotectjobs.com)



American Lamb Board Now Accepting Cooperative Funding Program Applications

The American Lamb Board allocates funds through the Cooperative Funding Program for local sheep producer groups, lamb suppliers and direct marketers. The program is designed to cost-share marketing efforts that align with ALB's mission to grow awareness and demand for American lamb. Applications can be submitted now through Sept. 30.

"The Cooperative Funding Program is a fantastic opportunity to help producers, suppliers and direct marketers share information and resources about the advantages of American lamb with consumers, retailers and the foodservice industry," said ALB Chairman Jeff Ebert. "The program was designed to cost-share marketing and promotional campaigns that reach consumers at the local level."

Producers can apply for funding to reach consumers, chefs or retailers through marketing and promotional projects designed to build awareness and grow demand for American lamb. In addition, suppliers – including direct marketers – can apply for funds to promote American lamb products in the retail or foodservice sectors. The promotions should use innovative marketing techniques to incentivize restaurants and/or retailers to promote and support American lamb.

ALB allocates funds annually to support local marketing initiatives targeting non-industry audiences. The program supports projects in which applicants are willing to share costs and provide additional resources for the funded project.

[Learn more at https://lambboard.com/funding-program.](https://lambboard.com/funding-program)



Maryland Extension Small Ruminant Program

The Maryland Extension Small Ruminant Program Facebook page is a great resource for sheep (and goat) producers. This social media site shares information about upcoming sheep webinars, clinics, articles and current news. Additionally, you'll find all things sheep posts to learn more about sheep health, nutrition, management and more!

The page is maintained by Susan Schoenian, Sheep & Goat Specialist Emeritus. The page is not affiliated with the University of Maryland.

[Search Facebook for @MDSmallRuminant](#)



We've been keeping a little secret...

Get ready for an International Suffolk Travel Experience!



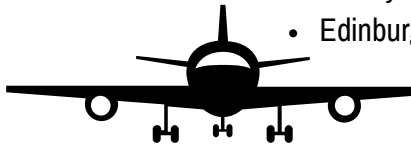
It's time that we let the secret out because we need to hear from you! With the help of our friends at the Suffolk Sheep Society in the UK and Ireland, an itinerary is coming together for an international Suffolk adventure!

Wouldn't it be fun to go on a sheep vacation...without the sheep?

Are you interested in joining us? If so, is 2025 too quick? Maybe 2026 works better? Those are some of the questions we need answered before we can finalize the trip! If you're interested, email amanda@suffolks.org. Members will be sent an email in the next few weeks with more information!

We anticipate the trip will be 5-7 days long, in June, scheduled around the time of the Highland Show, Scotland's largest agricultural show. Tentative schedule stops include:

- Commercial Flock utilizing Suffolk genetics
- Ram Performance Test Station
- Lamb Processor
- Pedigreed Flock visit
- Performance Flock visit
- Highland Show
- Rosslyn Chapel
- Edinburgh



Get those passports ready!

MISS THE RECENT SUFFOLK WEBINAR?

There's a lot more to parasite resistance than just worms!

Scott Bowdridge, Ph.D.
Professor of Food Animal Production

DAVIS COLLEGE | SCHOOL OF AGRICULTURE AND FOOD SYSTEMS

United SUFFOLK SHEEP ASSOCIATION

If you missed the recent Suffolk webinar, it's now archived on the USSA website and on the USSA Facebook page. If there is a topic you would like to learn more about, please contact the Suffolk office!

Past Suffolk webinars are available on the USSA website (under "programs" and the USSA Facebook page!

The Member Connection

Births

Shepherd Allen to Baxter & Morgan Beals, February 2024

Deaths

(click to link to obituary)

Glen Anderson, Nebraska (March 2024)

Susan Clair, Pennsylvania (January 2024)

Kenneth Heupel, California (June 2024)

Jim Roman, Ohio (December 2023)

Morrison "Morrie" Stevens, Michigan (July 2024)

Ralph Wilder, Idaho (June 2024)

Please share member connection updates by email: info@suffolks.org.

CONTENT HERDER



We're looking to Ewe! Do you have content you'd like to see us include? Or, if you think it needs to be included, write it up and send it over and we'll take a look at it! This publication is for you, help us customize for Suffolk Breeders!

Welcome

New USSA Members!

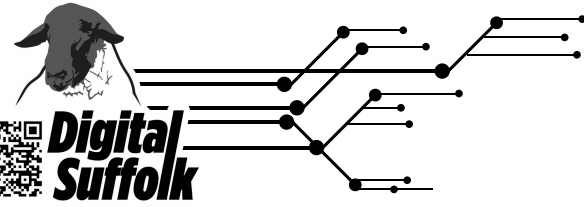
Brad & Felicia Allee, IN
Chris Beedle, IA
Neal & Therese Burgoyne, NY
Kristy Campbell, ND
Travis & Katie Ceroll, SD
Circle H Farm, OH
Ned Cursio, Ontario
Eric Dalton, TN
Jessica Martinez/Carey Deaton, TX
Ally & Dave Doerrmann, NJ

Chrissy Garrison, WA
Debra M Hall, OR
Jeremy Harlow, KY
Sharon J. Hatcher, TN
Jordan & Jessica Hiemstra, MI
Trevor Hintzman, MN
Randy Hintzman, MN
Stephan & Rachel Jarman, OH
Elena Jula, SC
Mike Kostelac, VA
Ethan Leggett, WV

Lucky Girl Farm, OR
Terry McClendon, NY
Laura McDowell, IA
Seth & Mellisa McMillan, IL
Jeffery Mennemeier, PA
Derek Miller, WV
School House Farm LLC, IL
Glenda Naeger, IL
Matt & Brady Olsen, UT
Albert Peterson, WI
Gregory Phebus, IN
RF Farms, KY

Tim Rife, OH
Jeff Roe, IA
Schutter Family Suffolks, MO
Michael & Marina Schwimmer, ME
Lili Solorzano, KS
Clint Stiles, IL
Mike Taylor, IL
Mike & Kelly Tiffany, WI
John Wagner Family Farm, IN
Michael Walsh & Roger Norgel, WI
Jareb Wilson, PA
Seth Worthington, UT

DIGITAL BY DESIGN



Just a snippet of what Digital Suffolk has to offer...it's more than just a registration program! All USSA and UJSSA members have access to Digital Suffolk at no extra cost. Contact the Suffolk Office to get your login!

IT'S BREEDING SEASON!

Did you know Digital Suffolk offers a tool to record mark dates and generate a due to lamb report?

RECORDING MARK DATES

Reg #	Flock Name/ID	Birth Date	Reg #	EWE Flock Name/ID	SIRE Reg #	Flock Name/ID	Mark Date	Service Type	Current Breedings
0121/2023	671639	01/21/2023	671639	Russell Sheep Co. 0010 RRNN					Serviced by MacCauley 5566 RR marked on 2023-08-23
12/21/2023	679626	12/21/2023	679626	Russell Sheep Co. 2300 RRNN					Serviced by Russell Sheep Co. 2351 RRNN marked on 2023-08-23
01/11/2023	679648	01/11/2023	679648	Russell Sheep Co. 2320 RRNN					
01/28/2023	679852	01/28/2023	679852	Russell Sheep Co. 2324 RRNN					
01/12/2020	668073	01/12/2020	668073	Russell Sheep Co. 0005 RRNN					Serviced by Russell Sheep Co. 1518 RRNN marked on 2023-08-23
01/19/2020	666799	01/19/2020	666799	Russell Sheep Co. 00017 RRNN					
01/21/2020	666800	01/21/2020	666800	Russell Sheep Co. 00021 RRNN (% Registry)	669941				Serviced by Russell Sheep Co. 1518 RRNN marked on 2023-08-23
01/23/2020	669937	01/23/2020	669937	Russell Sheep Co. 00031 RRNN (% Registry)					
01/24/2020	666804	01/24/2020	666804	Russell Sheep Co. 00034 RRNN (% Registry)					
01/24/2020	666808	01/24/2020	666808	Russell Sheep Co. 00043 RRNN					
01/25/2020	666802	01/25/2020	666802	Russell Sheep Co. 00049 RRNN					
01/25/2020	666803	01/25/2020	666803	Russell Sheep Co. 00051 (% Registry)					
01/26/2020	666804	01/26/2020	666804	Russell Sheep Co. 00056 RRNN					
01/26/2020	666805	01/26/2020	666805	Russell Sheep Co. 00059 RRNN					
01/26/2020	666806	01/26/2020	666806	Russell Sheep Co. 00060 RRNN					
01/26/2020	666807	01/26/2020	666807	Russell Sheep Co. 00062					
01/27/2020	666808	01/27/2020	666808	Russell Sheep Co. 00069 RRNN					
01/28/2020	666810	01/28/2020	666810	Russell Sheep Co. 00071 RRNN					Serviced by MacCauley 5566 RR marked on 2023-08-27

Reg #	Flock Name/ID	Mark Date	Service Type	Current Breedings
01/21/2022	674189	01/21/2022	674189	Russell Sheep Co. 00010 RRNN
02/21/2022	679626	02/21/2022	679626	Russell Sheep Co. 2300 RRNN
01/11/2023	679648	01/11/2023	679648	Russell Sheep Co. 2320 RRNN
01/28/2023	679852	01/28/2023	679852	Russell Sheep Co. 2324 RRNN
01/12/2020	668073	01/12/2020	668073	Russell Sheep Co. 0005 RRNN
01/19/2020	666799	01/19/2020	666799	Russell Sheep Co. 00017 RRNN
01/21/2020	666800	01/21/2020	666800	Russell Sheep Co. 00021 RRNN (% Registry)
01/23/2020	669937	01/23/2020	669937	Russell Sheep Co. 00031 RRNN (% Registry)
01/24/2020	666804	01/24/2020	666804	Russell Sheep Co. 00034 RRNN (% Registry)
01/24/2020	666808	01/24/2020	666808	Russell Sheep Co. 00043 RRNN
01/25/2020	666802	01/25/2020	666802	Russell Sheep Co. 00049 RRNN
01/25/2020	666803	01/25/2020	666803	Russell Sheep Co. 00051 (% Registry)
01/26/2020	666804	01/26/2020	666804	Russell Sheep Co. 00056 RRNN
01/26/2020	666805	01/26/2020	666805	Russell Sheep Co. 00059 RRNN
01/26/2020	666806	01/26/2020	666806	Russell Sheep Co. 00060 RRNN
01/26/2020	666807	01/26/2020	666807	Russell Sheep Co. 00062
01/27/2020	666808	01/27/2020	666808	Russell Sheep Co. 00069 RRNN
01/28/2020	666810	01/28/2020	666810	Russell Sheep Co. 00071 RRNN

- 1) Through the left-hand work order screen click BREEDING and then click MARK DATES.
 - 2) Fill in the sire's registration number (or use look-up icon to the right)
 - 3) Record mark date or AI date
 - 4) Select mark or AI (mark is defaulted)
 - 5) Click save
- You may need to refresh your screen to populate the breeding/service information.

-Helpful Hint -
Click the icon next to the sire's registration text field, this will give you a quick lookup screen of the rams you have listed in inventory. Note that leased rams/semen inventory will not appear here, you will need to manually record those registration numbers.

DUE TO LAMB REPORT

Reg #	Flock Name/ID	Sire Reg #	Flock Name/ID	Service Date(s)	Date at 147d	Earliest Lambing	Latest L. Lambing	Options
669938	Russell Sheep Co. 1003 RRNN	669941	Russell Sheep Co. 1518 RRNN	8/1/2023	12/26/2023	12/21/2023	12/31/2023	[did not settle]
666033	Russell Sheep Co. 00059 RRNN	669941	Russell Sheep Co. 1518 RRNN	8/2/2023	12/27/2023	12/22/2023	1/1/2024	[did not settle]
668872	Russell Sheep Co. 00100 RRNN	669941	Russell Sheep Co. 1518 RRNN	8/4/2023	12/29/2023	12/24/2023	1/3/2024	[did not settle]
669817	Russell Sheep Co. 00108 RRNN	669941	Russell Sheep Co. 1518 RRNN	8/5/2023	12/29/2023	12/25/2023	1/4/2024	[did not settle]
666808	Russell Sheep Co. 00069 RRNN	674907	MacCauley 5566 RR	8/7/2023	1/1/2024	12/27/2023	1/6/2024	[did not settle]
668083	Russell Sheep Co. 00051 (% Registry)	674907	MacCauley 5566 RR	8/7/2023	1/1/2024	12/27/2023	1/6/2024	[did not settle]
671184	Russell Sheep Co. 02041 (% Registry)	674907	MacCauley 5566 RR	8/7/2023	1/1/2024	12/27/2023	1/6/2024	[did not settle]
668088	Russell Sheep Co. 00076 RRNN	674907	MacCauley 5566 RR	8/7/2023	1/1/2024	12/27/2023	1/6/2024	[did not settle]
662300	Russell Sheep Co. 9046 RRNN	674907	MacCauley 5566 RR	8/7/2023	1/1/2024	12/27/2023	1/6/2024	[did not settle]
660244	Russell Sheep Co. 9003	674907	MacCauley 5566 RR	8/7/2023	1/1/2024	12/27/2023	1/6/2024	[did not settle]
659287	Russell Sheep Co. 9035	674907	MacCauley 5566 RR	8/8/2023	1/2/2024	12/28/2023	1/7/2024	[did not settle]
671187	Russell Sheep Co. 02020 RRNN	674907	MacCauley 5566 RR	8/8/2023	1/2/2024	12/28/2023	1/7/2024	[did not settle]
666804	Russell Sheep Co. 00060 RRNN	674907	MacCauley 5566 RR	8/10/2023	1/4/2024	12/30/2023	1/9/2024	[did not settle]
650567	Russell Sheep Co. 7105 RRNN	674907	MacCauley 5566 RR	8/10/2023	1/4/2024	12/30/2023	1/9/2024	[did not settle]
671191	Russell Sheep Co. 02034 RRNN	669941	Russell Sheep Co. 1518 RRNN	8/20/2023	1/14/2024	1/9/2024	1/19/2024	[did not settle]
671188	Russell Sheep Co. 02009 RRNN	674907	MacCauley 5566 RR	8/20/2023	1/14/2024	1/9/2024	1/19/2024	[did not settle]
664613	Russell Sheep Co. 02085 RRNN	669941	Russell Sheep Co. 1518 RRNN	8/21/2023	1/15/2024	1/10/2024	1/20/2024	[did not settle]

United Suffolk Sheep Association
PO Box 121
Holland, IA 50642
641.684.5291

Diane & Paul Russell, Russell Sheep Co. L.L.C.

Dam Flock Name/ID	Sire Flock Name/ID	Earliest Lambing 142 days	Date at 147 days	Last Lambing 152 days	Notes
Russell Sheep Co. 1003 RRNN	Russell Sheep Co. 1518 RRNN	12/21/2023	12/26/2023	12/31/2023	
Russell Sheep Co. 00059 RRNN	Russell Sheep Co. 1518 RRNN	12/22/2023	12/27/2023	01/01/2024	
Russell Sheep Co. 00005 RRNN	Russell Sheep Co. 1518 RRNN	12/24/2023	12/29/2023	01/03/2024	
Russell Sheep Co. 00108 RRNN	Russell Sheep Co. 1518 RRNN	12/25/2023	12/30/2023	01/04/2024	
Russell Sheep Co. 00069 RRNN	MacCauley 5566 RR	12/27/2023	01/01/2024	01/06/2024	
Russell Sheep Co. 00051 (% Registry)	MacCauley 5566 RR	12/27/2023	01/01/2024	01/06/2024	
Russell Sheep Co. 00051 (% Registry)	MacCauley 5566 RR	12/27/2023	01/01/2024	01/06/2024	
Russell Sheep Co. 02041 (% Registry)	MacCauley 5566 RR	12/27/2023	01/01/2024	01/06/2024	

DUE TO LAMB REPORT

- 1) Click BREEDING
- 2) Click DUE TO LAMB
- 3) This information can be exported to a downloadable pdf by clicking EXPORT

Downloaded PDF - Due to Lamb Report
Print to post on the refrigerator or in the barn office!



Plans are in progress for the USSA to partner with Flock 54 to link Flock 54 results into Digital Suffolk. Stay tuned to learn more about this venture.

Did you know that USSA members receive \$3 off per Flock 54 test?



Did you know?

George Washington, Thomas Jefferson and James Madison all raised sheep. In fact, Madison was sworn in wearing a coat spun from his sheep's wool. Woodrow Wilson kept a flock at the White House during World War I to keep the grass trimmed as a cost-cutting measure and to show support for the war effort.

Excerpt from Modern Farmer



FOUNDATION NEWS

f@suffolksuffolkfoundation

Supporting the Suffolk breed through Youth Development, Education, and Research.

Support Contact the Suffolk Office!

2024 AAJS Cash Award Winners - \$800 Total!

Each year the Suffolk Foundation provides cash prizes to any 1st - 3rd placing Suffolk exhibitor in the AAJS leadership events. Entries must be promoting Suffolk sheep - \$100 for 1st place, \$75 for 2nd place and \$50 for 3rd place. These awards are given in addition to the UJSSA awards given to the top placing Suffolk exhibitor in each of the leadership contests/divisions.

- \$100 • Felicity Groves (MI/CAN) • 1st place Junior Poster
- \$100 • MacKenzie Horbostel (IL) • 1st place Junior Photo
- \$100 • Austyn Groves (MI/CAN) • 1st place Beginner Essay
- \$100 • Austyn Groves (MI/CAN) • 1st place Beginner Logo
- \$100 • Greeley Everts (IA) • 1st place Junior Logo
- \$75 • MacKenzie Hornbostel (IL) • 2nd place Beginner Essay
- \$75 • Felicity Groves (MI/CAN) • 2nd place Junior Logo
- \$50 • Brodie Boyd (OH) • 3rd place Beginner Logo
- \$50 • Allee Hoover (PA) • 3rd place Intermediate Ad Design
- \$50 • Felicity Groves (MI/CAN) • 3rd place Junior T-shirt Design



Join us to celebrate the Suffolk Foundation!

WHERE

NAILE, Suffolk Open Show

WHEN

Tuesday, November 17th

TIME

Stop by the Suffolk booth during the Suffolk Open Show for snacks and a glimpse of the Foundation's success

NAILE Show Programs

New this year - the Suffolk Foundation will provide show programs for sheep entered in the NAILE junior and open Suffolk shows. Programs can be found at the Suffolk booth - free will donation.

\$43,000 offered through Suffolk Foundation Scholarships

The Suffolk Foundation is committed to supporting Suffolk youth. In 2025, the Suffolk Foundation will offer up to 10 scholarships totaling \$43,000. Suffolk youth enrolled in a junior/community college, four-year college/university, trade school or accredited graduate programs are eligible for scholarships offered by the Suffolk Foundation. The scholarship application deadline is February 1.

Young Producers Travel Grant to the Suffolk Event

A new program this year was the Young Producer Travel Grant, which provided financial assistance for young producers aged 40 and under to attend the Suffolk Event. The Foundation initially planned to give four \$750 grants. There was such an excellent response to this new program the Foundation awarded the four \$750 grants, and provided \$300 grants for six additional young producers to attend. It was truly heartening to see so many young families at the Suffolk Event, and the Foundation is looking forward to supporting it again in 2025.

Ewe Grant Program - New Application Deadline: February 1

With an overwhelming applicant pool, the Suffolk Foundation expanded the ewe grant program from 5 to 10 winners in 2024. Through this program youth, new to the Suffolk breed, are awarded up to \$1000 to purchase a Suffolk ewe lamb for the first time. Winners commit \$250 toward the purchase. **New, in 2025, the grant application deadline is February 1.** The earlier application deadline allows for review and the winner announcement to be made in early March, giving award winners more time to plan prepare for their new purchase!

Jon Althoff, Indiana

Olivia Frerich, Texas

Paxton James, Oklahoma

Brodie Boyd, Ohio

Phillip Gardner, Indiana

Zoie Kilcrease, Texas

Andrew Freidenstine, New York

Cortland Green, Pennsylvania

Joanne Killeen, Washington

Rylee Lemaster, Arkansas

Foundation Fundraiser Items

Keychain - Bottle Opener - Charm - Pin/Tie Tack






All items \$20/each

Contact the Suffolk Office to order!

Entry Deadline Oct 10

BRED EWE & EWE LAMB
& EQUIPMENT ONLINE SALE

OCT 21 @INTEGRITYLIVESTOCKSALES.COM

2024

Scholarship Winners

MacCauley Foundation

\$10,000

Katherine Purvis, Indiana

\$7,500

Raesa Zelinsky, South Dakota

\$6,500

Lilly Ostlie, Minnesota

\$5,000

Jordyn Leininger, Indiana

\$4,000

Sidney McAllister, Ohio

\$3,000

Caleb Antram, Pennsylvania

\$2,500

Kayleen Kulas, Minnesota

Royer Farm

\$2500

Mackayla Vlazny, Iowa

Suffolk Foundation

\$1000

Savannah Bailey, Wisconsin

Olivia Stodghill, Iowa

LEARN MORE >>

<https://suffolks.org/scholarships.html>

Apply

2025 Application Deadline: Feb. 1st